

## Airflow Sensor (E-CBN-S-1)

- Monitoring with its own SNMP OID data
- Thermistor type sensor ( on/off)
- Connection with RJ45 jack with standard CAT5 UTP cable



## Temperature Sensor (E-CBN-S-4)

- -55 °C +75 °C temperature measurement range
- $\pm 0.5$  °C accuracy
- Monitoring with its own SNMP OID data
- Daisy chain connection up to 8 sensor
- 4 or 8 string combination
- Connection with RJ45 jack with standard CAT5 UTP cable



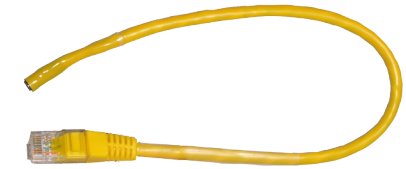
## Smoke Sensor (E-CBN-S-2)

- Detector type ( photoelectric chamber)
- Relay Output
- Accuracy %3-%6 Obs/m
- Automatic alarm resetting
- 4 year battery life with 15 mA standby current
- 9 V DC Power Input



## Temperature Sensor 2 (E-CBN-S-5)

- -55 °C +75 °C temperature measurement range
- $\pm 0.5$  °C accuracy
- Monitoring with its own SNMP OID data
- Connection with RJ45 jack with standard CAT5 UTP cable



## Vibration Sensor (E-CBN-S-3)

- Normally closed, momentary open relay output
- 1-50 gram contact pressure settable
- 6 gram setted as standard
- Contact activation period is 45 ms (with 6 gr.pressure)
- RJ45 Socket connection



## Temperature & Humidity Sensor (E-CBN-S-6)

- -40 °C +75 °C temperature, 0-%100 Humidity measurement range
- 25°C'den  $\pm 0.5$  °C temperature,  $\pm 3$  Humidity accuracy
- Monitoring with its own SNMP OID data
- Connection with RJ45 jack with standard CAT5 UTP cable



## ULTRA THIN FRAME LED LIGHTING (L-CBN-A-\*\*)

- Ultra thin frame for LED's
- Serial connection with connection accessories (up to 36 W)
- 300 / 500 / 800 / 1000 mm length options
- 5W, 450 lm (3014 or 3528 SMD LED) 2700 - 6500 (K) color temperatures
- 12V or 24V DC power input option
- It is possible to create rectangle or square type layouts with 90° connection accessory (up to 36 W)

### Options:

- Point touch On/off switch
- Touch On/off switch with dimmer
- Any point touch On/off switch with dimmer

## TRIANGLE LED LIGHTING (L-CBN-B-\*\*)

- Low Profile e LED type lighting unit for 90° corners
- Serial connection with connection accessories (up to 36 W)
- 300 / 500 / 800 / 1000 mm length
- 3 / 5 / 8 / 10W, 250 / 450 / 700 / 800 lm (3014 veya 3528 SMD LED)
- 2700 - 6500 (K) color temperatures
- 12V or 24V DC power input option

### Options:

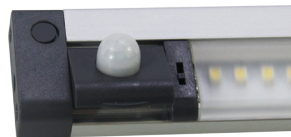
- Point touch On/off switch
- Touch On/off switch with dimmer
- Any point touch On/off switch with dimmer

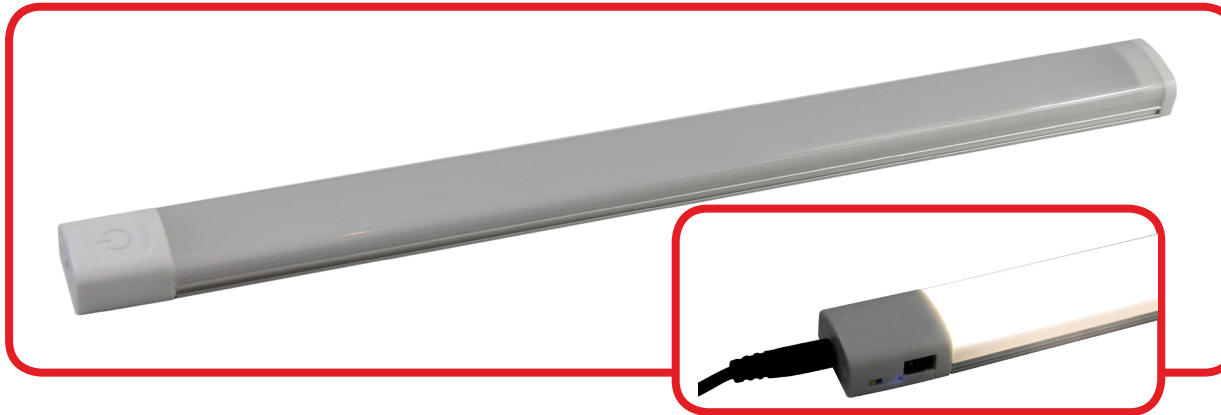
## THIN FRAME LED LIGHTING (L-CBN-C-\*\*)

- Thin frame type LED lighting unit
- Serial connection with connection accessories (up to 36 W)
- 300 / 500 / 1000 mm length • 2700 - 6500 (K) color temperatures
- 3 / 5 / 10W, 250 / 450 / 800 lm (3014 or 3528 SMD LED)
- 12V or 24V DC power input option

### Options:

- Point touch On/off switch
- Touch On/off switch with dimmer
- IR sensor
- PIR sensor





## FROSTED LED LIGHTING (L-CBN-D-\*\*)

- Thin frame indirect beam LED unit
- Serial connection with connection accessories (up to 36 W)• 300 / 500 mm length
- 3.6 / 7.5W, 250 / 420 lm (3014 SMD LED)
- 2700 - 6500 (K) color temperatures
- 12V DC power input

### Options:

- IR sensor
- Touch On/off switch with dimmer



## FROSTED LED LIGHTING IP65 (L-CBN-E-\*\*)

- Thin frame indirect beam LED unit
- Serial connection with connection accessories (up to 36 W)
- 600 / 900 / 1200 mm length
- 4.3 / 6.3 / 8.5W, 350 / 530 / 700 lm (3528 SMD LED)
- 2700 - 6500 (K) color temperatures
- 12V DC power input



## OPAL LED LIGHTING 220V (L-CBN-F-\*\*)

- Thin frame indirect beam LED unit
- Serial connection with connection accessories (up to 36 W)
- 300 / 600 / 900 / 1200 mm length
- 6 / 11 / 15 / 20W, 360 / 400 / 600 / 800 lm (3528 SMD LED)
- 2700 - 6500 (K) color temperatures
- 220V AC power input

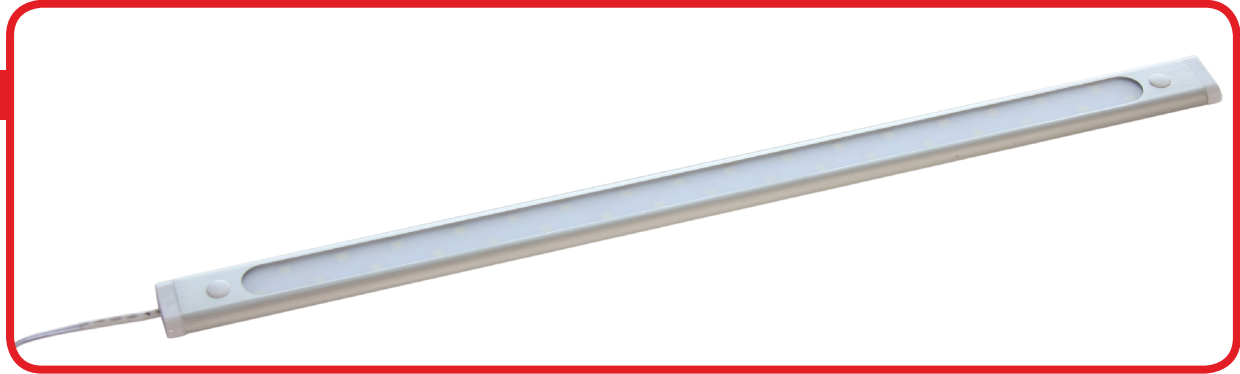
# Lighting Solutions

## ALUMINIUM LED LIGHTING (L-CBN-G-\*\*)

- Aluminium frame LED lighting unit
- 300 / 500 mm length
- 3.6 / 6.6 W, 200 / 360 lm (5050 SMD LED)
- 2700 - 6500 (K) color temperatures
- 12V or 24V DC power input option

### Options:

- IR sensor

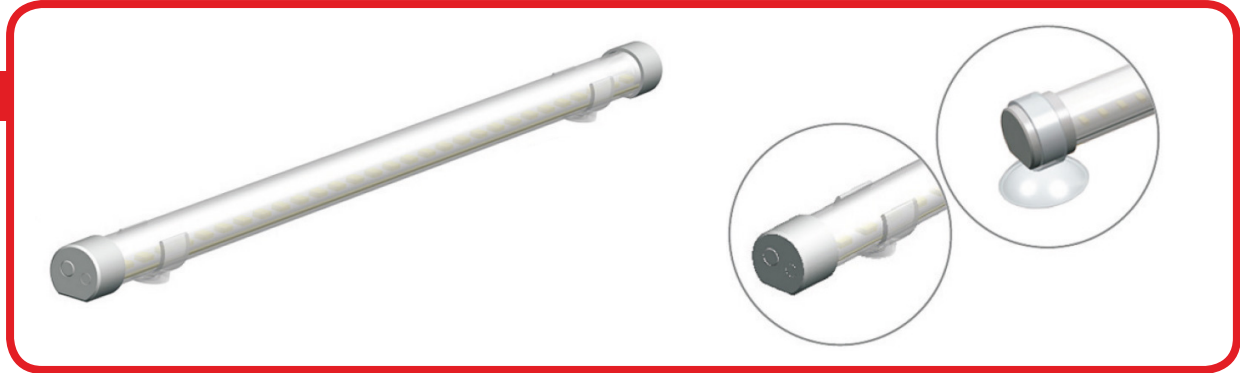


## CYLINDRICAL LED LIGHTING IP67 (L-CBN-H-\*\*)

- LED lighting 360° rotatable with cylindric frame
- Waterproof (IP67 protection)
- 600 mm length
- 5W, 450 lm (3014 SMD LED)
- 2700 - 6500 (K) color temperatures
- 12V DC power input

### Options:

- Sucker or clips assembly options



## CLIP LED LIGHTING (L-CBN-K-\*\*)

- Decorative lighting unit ( for shelves and exhibition areas )
- Stainless steel
- 40 / 100 mm length
- RGB option
- 0.24-0.72 W light power range
- 12V DC power input

